

## HOW DO I QUALIFY?

Are you 18 years of age or older?

Do any of the following apply to you?

- Homeless
- Receiving Food Stamps
- Receiving TANF benefits
- Receiving Supplemental Social Security

Does your household income for the last year not exceed the following guidelines?

Household Size	Annual Income
1	\$13,590
2	\$18,310
3	\$23,030
4	\$27,750
5	\$32,470
6	\$37,190
7	\$41,910
8	\$46,630

“WIOA WILL PROVIDE THE OPPORTUNITIES FOR WORKERS AND LEARNERS TO OBTAIN THE FOUNDATION SKILLS NECESSARY FOR THE 21ST CENTURY JOBS AND FOSTER A MODERN WORKFORCE THAT CAN COMPETE IN A GLOBAL ECONOMY”

# WIOA ADULT

## Amanda Riley

Desk: (417) 657.0810

Cell: (417) 650.7797

ariley@copinc.org



## WHAT IS WIOA?

Workforce Innovation and Opportunity Act (WIOA) Adult is a federally funded program that serves individuals and helps employers meet their workforce needs. This program enables workers to obtain good jobs by providing them with job search assistance and training opportunities.

WIOA establishes a priority requirement with respect to funds allocated to a local area for adult employment and training activities.

## WHAT KIND OF SERVICES DOES WIOA OFFER?

**Funding through the Workforce Innovation and Opportunity Act (WIOA), some of the services we offer include:**

**On-the-Job Training**

**Paid Work Experience**

**Labor Market Information**

**Career Planning & Job Retention**

**Resume Building**

**College or VoTech Tuition Assistance**

**Budgeting & Managing Resources**

**& MORE!**

*The Missouri Department of Higher Education and Workforce Development is an Equal Opportunity employer/program. Auxiliary aids and services are available upon request to individuals with disabilities. Missouri Relay Services at 711.*



## WHAT DO I NEED TO ENROLL?

**Proof of:**

- Date of Birth
- Social Security Number
- Citizenship
- Selective Service *(if applicable)*
- Low-Income
- Household Size



## HOW DO I QUALIFY?

Ages 18+

### Do any of the following apply to you?

1. Terminated or laid off from employment, including separation notice from active military service (under other than dishonorable)?  
Eligible for UI **AND** unlikely to return to previous occupation or industry?
2. Terminated or laid off or received notification of and not eligible for UI due to insufficient earnings or is cannot receive UI because the employer was not covered under a state unemployment compensation law?  
**AND** Unlikely to return to previous occupation or industry?
3. Terminated or laid off as a result of any permanent closure of or any substantial lay off at a plant, facility, or enterprise?
4. Employed at a facility at which the employer has made a general announcement that they will be closing the facility within 180 days?
5. Self-employed but unemployed as a result of general economic conditions in the community in which you reside or because of natural disaster?  
(including farmers, ranchers, or fishermen)
6. An individual who has been providing unpaid service to family members in the home **AND** who has been dependent on the income of another family member but is no longer supported by that income?  
OR  
Dependent Spouse of a military member on active duty that is deployed or called to active duty **AND** you are unemployed and/or underemployed and experience difficulty in obtaining or upgrading employment?
7. Spouse of a member of the Armed Forces on active duty and has experienced a loss of employment due to relocation to accommodate a permanent change in duty station?
8. Spouse of a member of the Armed Forces on active duty who is underemployed or experiencing difficulty in obtaining or upgrading employment?

“WIOA WILL PROVIDE THE OPPORTUNITIES FOR WORKERS AND LEARNERS TO OBTAIN THE FOUNDATION SKILLS NECESSARY FOR THE 21ST CENTURY JOBS AND FOSTER A MODERN WORKFORCE THAT CAN COMPETE IN A GLOBAL ECONOMY”

**Amanda Riley**

Cell: (417) 650-7797

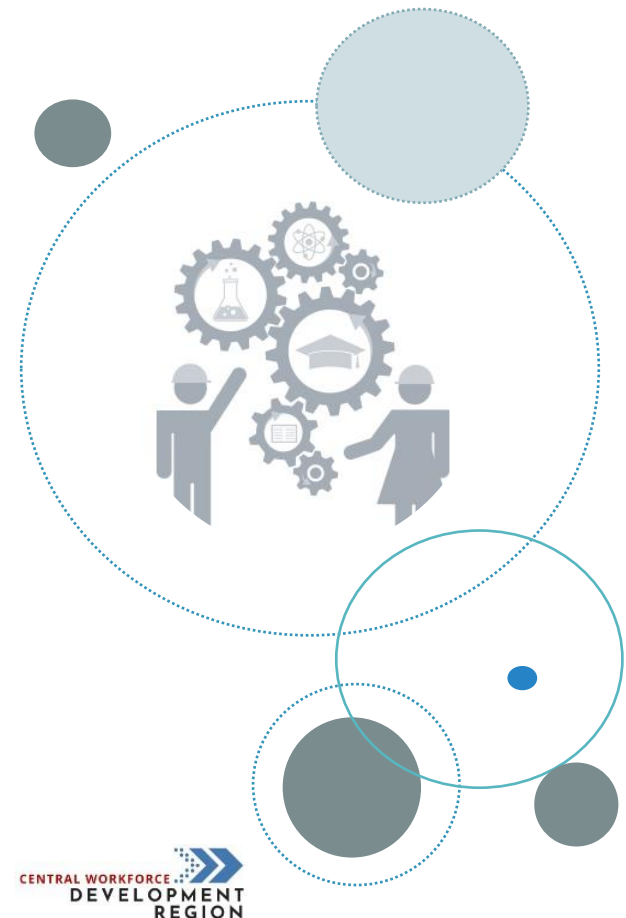
Desk: (417) 657-0809

[ariley@copicinc.org](mailto:ariley@copicinc.org)



# WIOA

## Dislocated Worker



## WHAT IS WIOA Dislocated Worker?

The Dislocated Worker program is designed to help workers get back to work as quickly as possible and overcome barriers to employment. When individuals become dislocated workers as a result of job loss, mass layoffs, global trade dynamics, or transitions in economic sectors, the Dislocated Worker program provides services to assist them in re-entering the workforce.

This program provides significant resources to implement workforce education, training, and employment programs and help displaced workers.

## WHAT KIND OF SERVICES DOES WIOA OFFER?

Funding through the Workforce Innovation and Opportunity Act (WIOA), some of the services we offer include:

On-the-Job Training

Paid Work Experience

Labor Market Information

Career Planning & Job Retention

Resume Building

College or VoTech Tuition Assistance

Budgeting & Managing Resources

& MORE!



## WHAT DO I NEED TO ENROLL?

### Proof of:

- Date of Birth
- Social Security Number
- Citizenship
- Selective Service *(if applicable)*
- Permanently Laid Off
- Unemployment
- Unlikely to Return

*The Missouri Department of Higher Education and Workforce Development is an Equal Opportunity employer/program. Auxiliary aids and services are available upon request to individuals with disabilities. Missouri Relay Services at 711.*

Workforce Innovation and Opportunity Act



# Are you ready for a job or a better job?



## FREE help if you are getting Food Stamps!

**SkillUP** is a program for Food Stamp recipients to gain skills, training or work experience. SkillUP is FREE through our partners and can help prepare you for a job that can raise your income.

### How can SkillUP help?

- SkillUP coaches know employers who are ready to hire you!
- SkillUP can pay for the training you can't afford. Classes are offered that work around your schedule and can be finished in as little as a few weeks.
- SkillUP coaches can help with your resume and interviewing skills.
- SkillUP can help pay for transportation to work.
- SkillUP can help pay for the uniform or other items you need to start employment.

To find a location near you, go to [On.mo.gov/SkillUP](https://On.mo.gov/SkillUP)



The Family Support Division is an equal opportunity provider and employer. The Food and Nutrition Service is an equal opportunity provider and employer. For additional information about Missouri Division of Workforce Development services, contact a Missouri Job Center near you. Locations and additional information are available at [jobs.mo.gov](https://jobs.mo.gov) or 1-888-728-JOBS (5627). Missouri Division of Workforce Development is an equal opportunity employer/program. Auxiliary aids and services are available upon request to individuals with disabilities. Missouri Relay Services at 7-1-1.

# Laid off, Reorganized or Outsourced out of a job?



## ASK ABOUT OUR DISLOCATED WORKER PROGRAM!

To find out more including eligibility requirements visit us at  
Missouri Job Center  
2900 East Sunshine, Springfield  
or  
Call us at  
417-887-4343

If you have received unemployment benefits in the last five years, or have recently experienced a lay off, you may qualify for these benefits:

- Go back to school
- Learn a new trade
- Improve soft skills
- Find job opportunities



A proud partner of the [americanjobcenter](#) network®  
Ozark Region

The Missouri Job Center is an equal opportunity employer/program. Auxiliary aides and services available on request to individuals with disabilities. MO TTY users call 800-735-2966 or contact Missouri Relay at 711.



## HOW DO I QUALIFY?

WIOA Youth Program has two categories,  
In-School and Out-of-School.

### If you are not attending school:

*Are you between the ages of 16-24?*

### If you are attending school:

(high school, homeschool, or college)

*Are you between the ages of 16-21?*

*Are you Low Income?*

*(Receive free/reduced lunches, receiving food stamps, live in a high poverty area)*

Do one of the following barriers apply to you?

- High School Dropout
- Basic Skills Deficient
- Pregnant or Parenting
- Homeless or Runaway
- In or Aged out of Foster Care
- Offender
- Documented Disability
- English Language Learner
- Receiving TANF or SNAP
- Low Income

“WIOA WILL PROVIDE THE OPPORTUNITIES FOR WORKERS AND LEARNERS TO OBTAIN THE FOUNDATION SKILLS NECESSARY FOR THE 21ST CENTURY JOBS AND FOSTER A MODERN WORKFORCE THAT CAN COMPETE IN A GLOBAL ECONOMY”

**Mick Jagears**

Desk: (417) 532-4225

Cell: (417) 664-7681

[Mjagears@copinc.org](mailto:Mjagears@copinc.org)



# WIOA YOUTH



## WHAT IS WIOA?

WIOA Youth is a federally funded program built to empower youth and foster a modern workforce.

WIOA Youth is for individuals between the ages of 16-24 years of age, and assists with a variety of barriers. The purpose of WIOA Youth program is to help young adults to overcome barriers that hinder them from being successful.

WIOA Youth program is in place to encourage responsibility, accountability, and self-sufficiency.



## WHAT KIND OF SERVICES DOES WIOA OFFER?

Funding through the Workforce Innovation and Opportunity Act (WIOA), some of the services we offer include:

**Assistance with High School Equivalency**

**Work Readiness**

**Paid Work Experience** (\$13/hr +)

**Leadership Development**

**Job Skills Training**

**Career Planning & Job Retention**

**Resume Building**

**College or Votech Tuition Assistance**

**Budgeting & Managing Resources**

**& MORE!**

*The Missouri Department of Higher Education and Workforce Development is an Equal Opportunity employer/program. Auxiliary aids and services are available upon request to individuals with disabilities. Missouri Relay Services at 711.*



## WHAT DO I NEED TO ENROLL?

**Proof of:**

- Date of Birth
- Social Security Number
- Citizenship
- Selective Service *(if applicable)*
- Barrier *(see barrier list)*